

April 30, 2025

Object: Exploration in the Wemindji traplines area

The present letter is to inform Chief and Council of the Cree Nation of Wemindji about Kenorland Minerals North America (the "Company") activities for this upcoming year.

The projects and the company

The **Eeyou Istchee Project** (Figure 1) overlaps with traplines M01A, M09, M10, M11, M14, M14B, M15, M21, M23, VC29 and VC36. The project is made of 5,141 claims (~269,941 ha) and was first staked by the Company last year, with some claims still pending ownership transfer. This summer, the project will undergo its **first** exploration program, focused on surface program.

2025 Exploration Work

Surface Exploration

We plan to be actively working from early June through September. During this period, a team comprising up to 12 soil samplers, 1 project manager, 1 pilot and 1 cook will carry out **soil sampling, across the entire project area**, primarily targeting gold-related deposits.

- Movements within the project area will be conducted by helicopter and on foot.
- Accommodation for field workers will be in temporary camp(s) established on the Project claims.

Please feel free to reach out via the below email at any time if you have any questions or require additional information.

"Alex Gallardo"

Alex Gallardo
Sustainable Development Manager
relations@kenorlandminerals.com

cc. Deputy Chief of Wemindjii, Arden Visitor
cc. Cree Mineral Exploration Board, Director Youcef Larbi

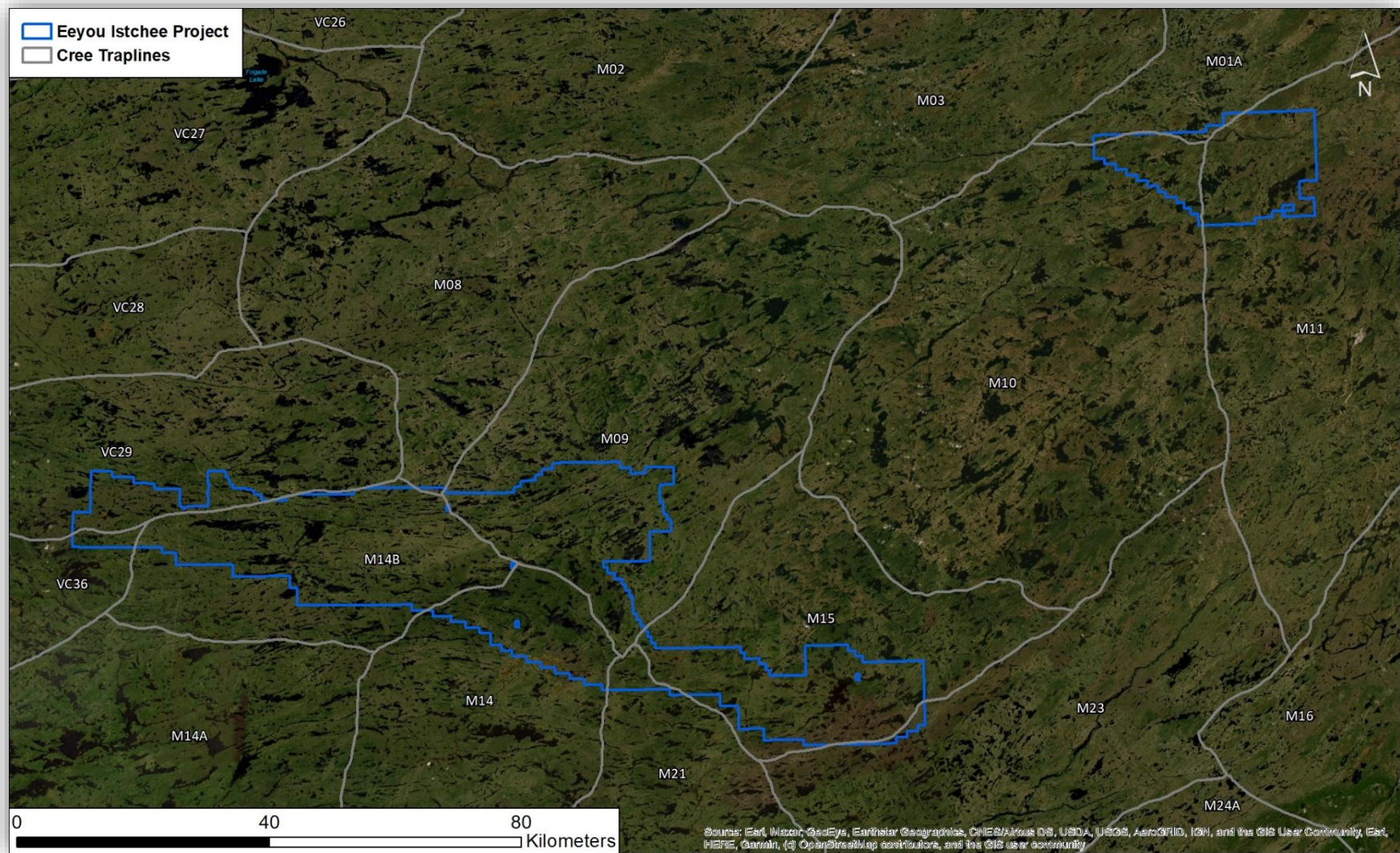


Figure 1. Location of the Eeyou Istchee Project over traplines