

April 23, 2025

Object: Exploration Work in the Waswanipi traplines area

The present letter is to inform Chief and Council of the Cree Nation of Waswanipi about *Kenorland Minerals* (“the Company”) exploration activities related to the O’Sullivan Project.

The mineral claims of the O’Sullivan Project are located on traplines W24A, W24B and W24D (Figure 1). The O’Sullivan Project is made up of 506 claims (27,587 ha) and was staked by the Company in 2020. Below is a brief overview of the upcoming activities, which will overlap trapline W24B:

- **Phase I - Geochemical Survey:** A soil sampling survey will be conducted by 10 technicians over ~10 days, from about May 22 to 31, 2025, south of Puskitamika lake (Figure 2). Personnel will operate out of Lebel-sur-Quévillon, accessing the sampling grid via pickup trucks. Travel between sampling points will primarily be on foot, with possible use of ATVs.
- **Phase II – Geophysics Survey:** *Pending results* from the geochemical survey, a ground geophysical survey may be conducted in late July or early August 2025 to investigate any geochemical anomalies identified.
- **Phase III – Diamond Drilling :** *Subject* to the outcomes of the geophysical analysis, a one-month drilling campaign could commence in late October 2025.

As indicated, Phases II and III depend significantly on the outcomes of the initial geochemical survey (Phase I). We will keep you updated on developments as the project progresses.

Feel free to contact us for any additional information or if you have any comments regarding our work program.

Regards,



Alex Gallardo
Sustainable Development Manager
+1.236.873.2689 | alex@kenorlandminerals.com

CC. Deputy Chief, Rhonda Oblin
CC. Cree Mineral Exploration Board, Youcef Larbi

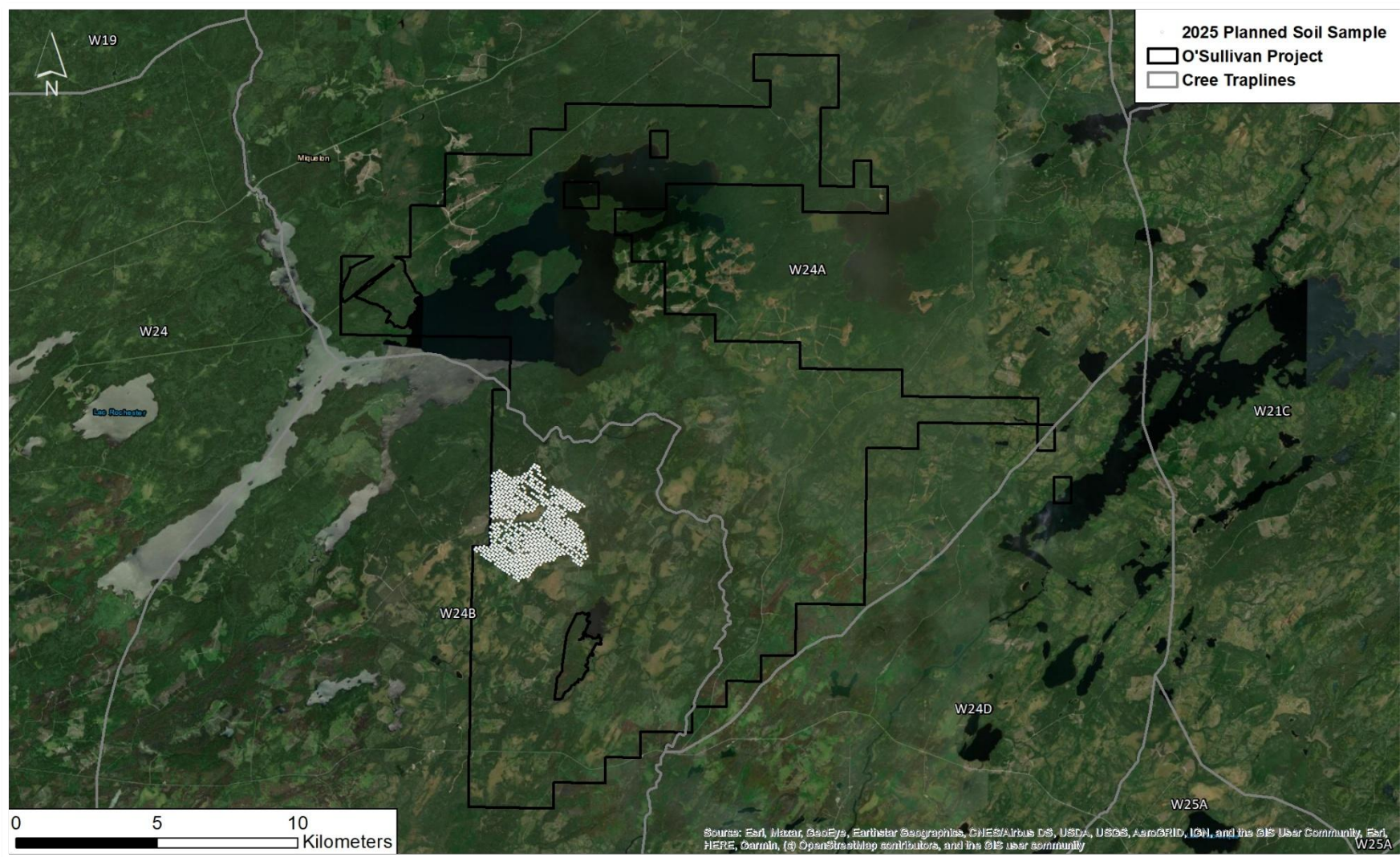


Figure 1. O'Sullivan Project over Waswanipi Traplines

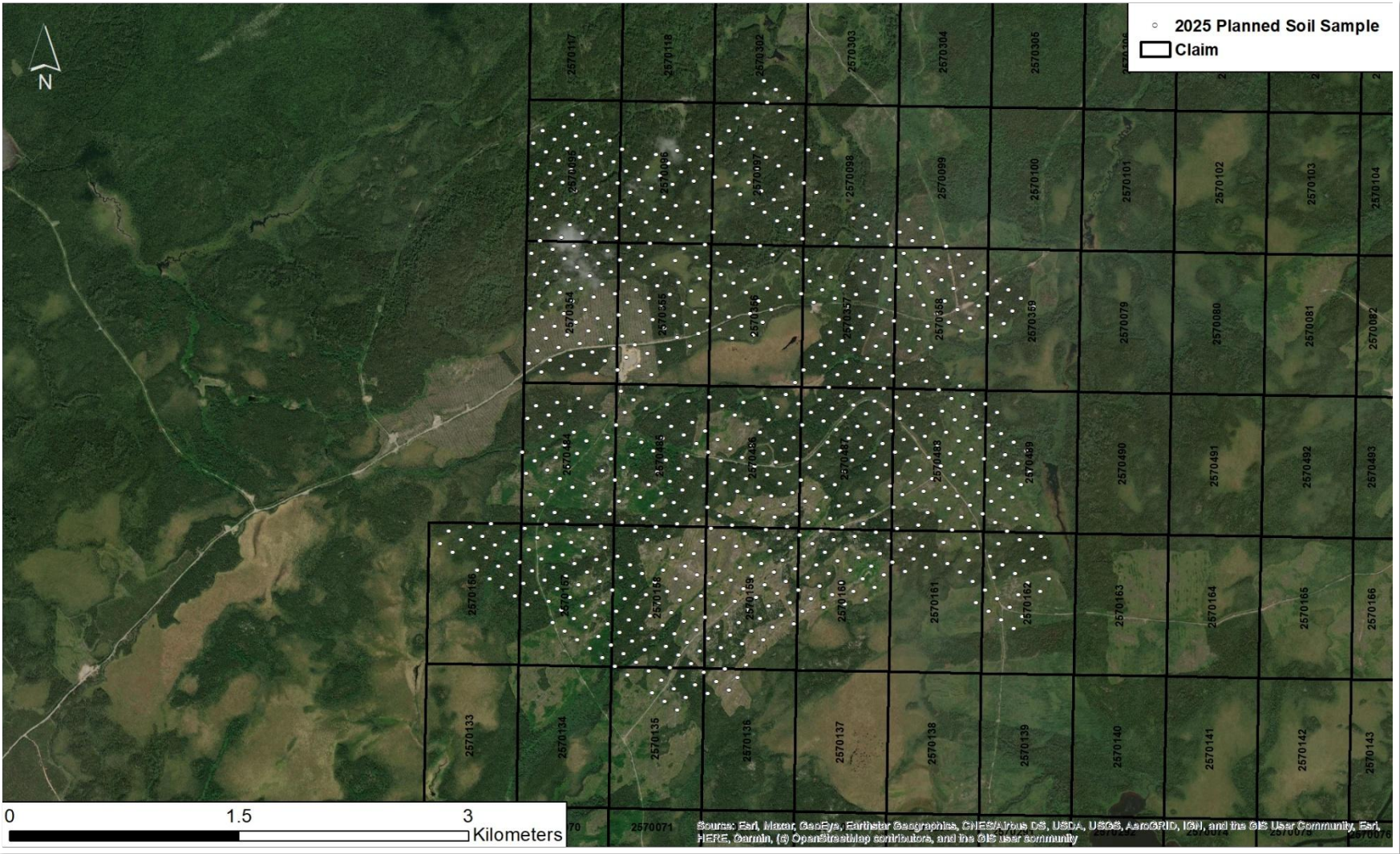


Figure 2. Planned Soil Survey over W24B Trapline